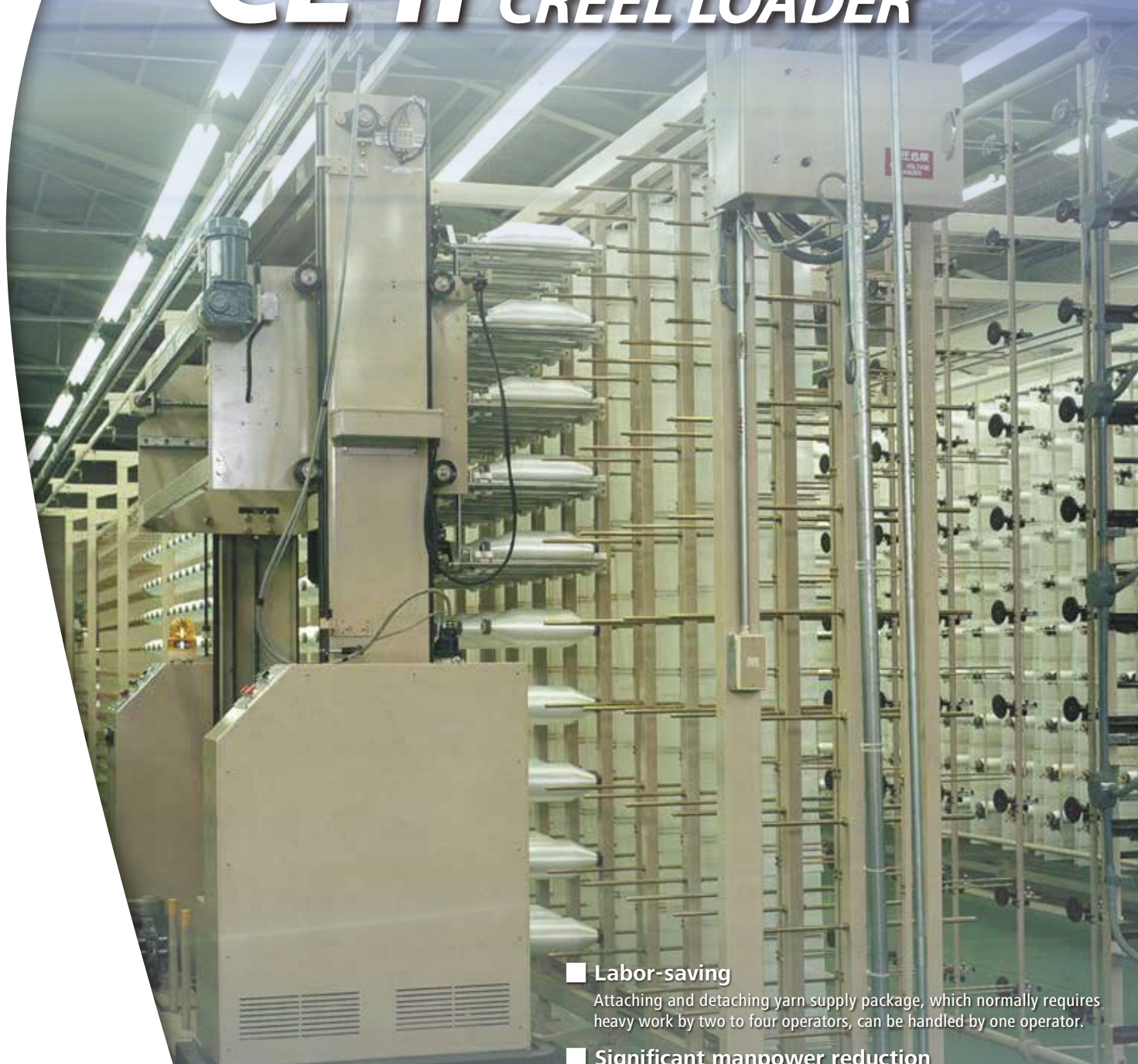




# CL-II CREEL LOADER



## ■ Labor-saving

Attaching and detaching yarn supply package, which normally requires heavy work by two to four operators, can be handled by one operator.

## ■ Significant manpower reduction and Safe Work Environment

Operators are free from handling heavy yarn package and dangerous operations at height. Manpower is significantly reduced and safe working environment are realized.

## ■ No Damage to Yarn Package

With full automated operation, outer surface of the yarn package is never contacted, avoiding damage to yarns.

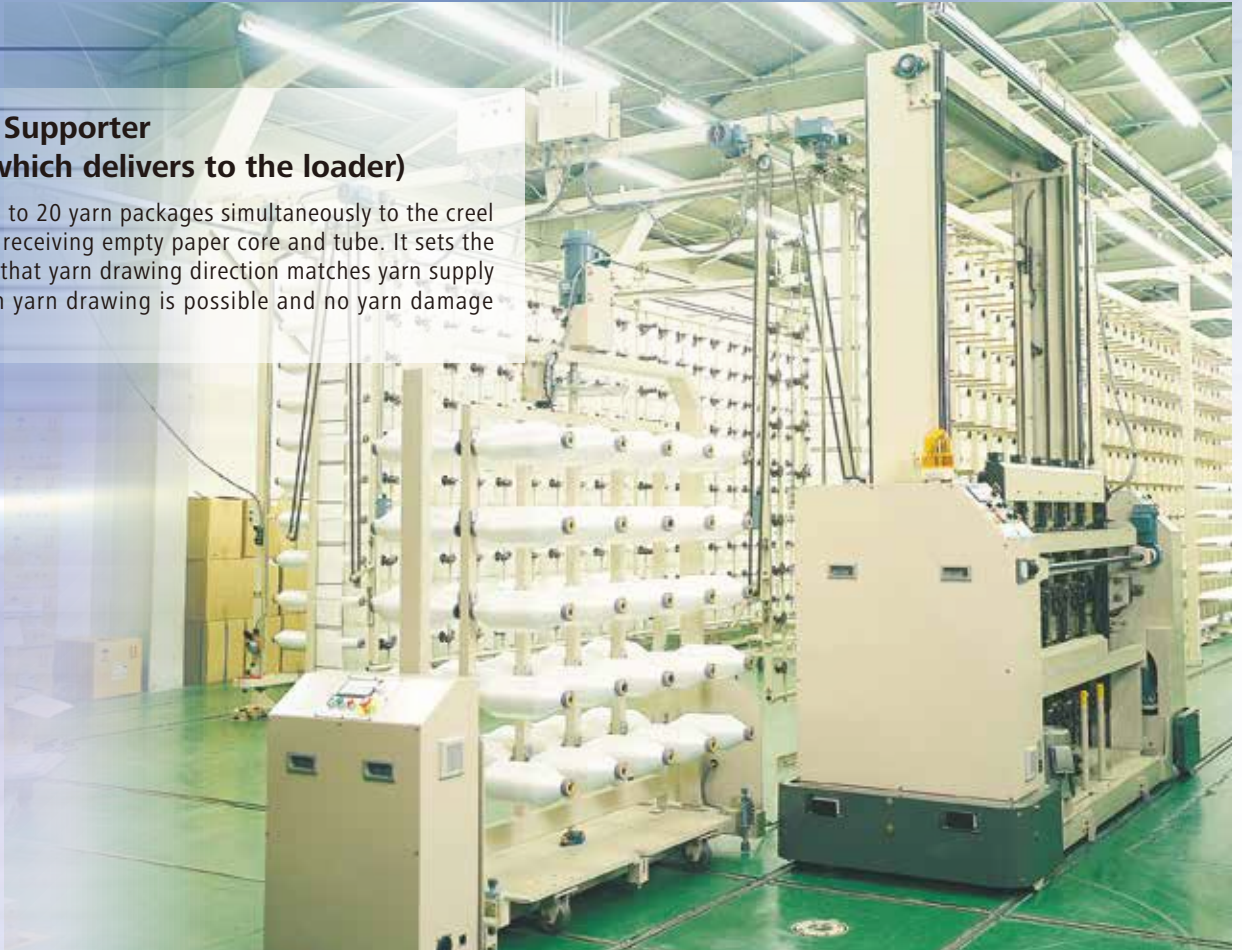
## ■ Supports All Yarn Package Types

It is possible to handle any types of the yarn packages, such as full large drum, cheese, pirn, furthermore, empty paper core, and tube.



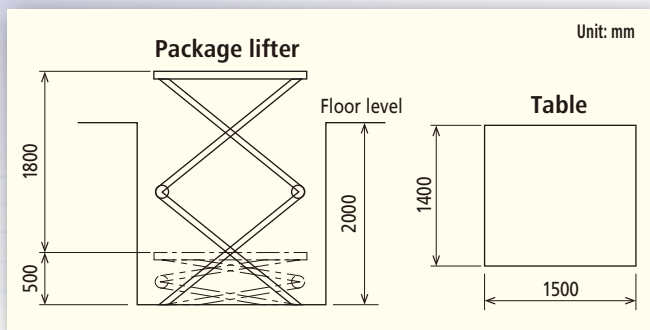
■ **Package Supporter**  
(Device which delivers to the loader)

It delivers 12 to 20 yarn packages simultaneously to the creel loader while receiving empty paper core and tube. It sets the packages so that yarn drawing direction matches yarn supply side. Smooth yarn drawing is possible and no yarn damage occurs.



■ **Package Lifter (Lifts yarn package boxes.)**

The lifter moves the package pallets of 500 to 700 kg up and down. This allows workers to be free from back pain and fatigue because the workers can deliver the yarn package boxes at the best height. Transfer efficiency is increased since double pallet stacking is also possible.



■ **Package Transfer (Lifts yarn packages.)**

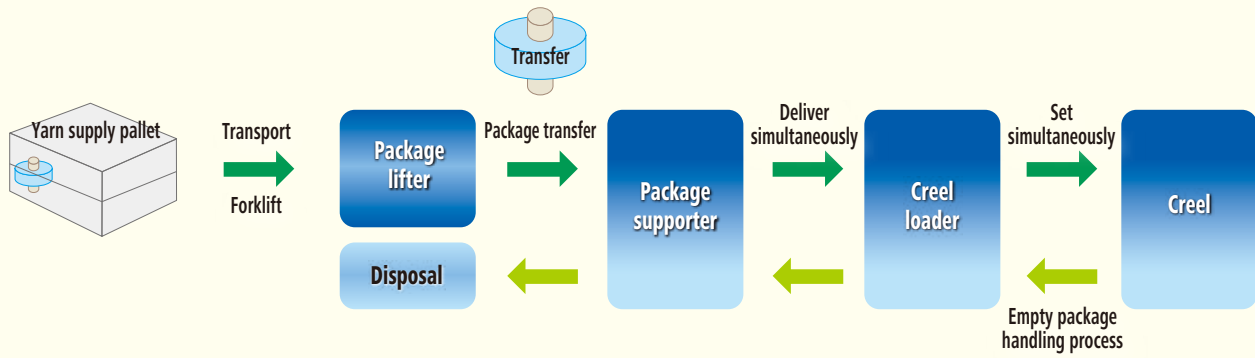
The unit transfers the large packages lightly and securely. It handles all the packages in well-balanced manner without the weight feel. Operation with the control grip allows an operator to move it up and down freely. Any operators can easily handle.

■ **Package Chuck (Holds yarn packages.)**

The device catches the inner surface of the package's paper core with a hook. The yarns and the paper core are not damaged. It is possible to use for yarn packages of any manufacturers, with inner diameter of the paper core between 90mm and 120mm, without having to change the package chuck.



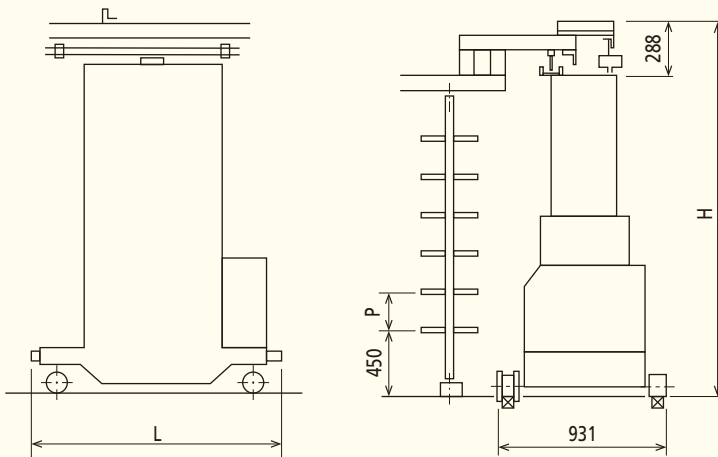
## ■ Yarn Package Workflow



## ■ Dimensions

### 1) Creel Loader

Unit: mm



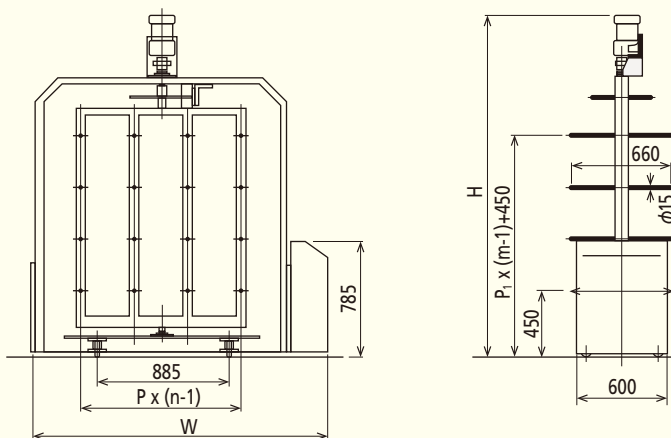
#### Spindle arrangement /parallel (4-column creel frame)

Spindle pitch (vertical) P		350	370	390
Width (L)		2774	2854	2934
Total height (H)	Spindle 6 rows	2812	2922	3032
	Spindle 8 row	3512	3662	3812

#### Spindle arrangement /Zig-zag (4-column creel frame)

Spindle pitch (vertical)P		350	370	390
Spindle pitch (horizontal)P1		305	320	340
Width (L)		2639	2704	2784
Total height (H)	Spindle 6 rows	2987	3107	3227
	Spindle 8 rows	3687	3847	4007

### 2) Package Supporter



#### Spindle arrangement /parallel (4-column creel frame)

Spindle pitch (vertical)P, P1		350	370	390
Width (W)		1940	2020	2090
Total height (H)	Spindle 6 rows	1955	2005	2055
	Spindle 8 rows	2305	2375	2445

#### Spindle arrangement /Zig-zag (4-column creel frame)

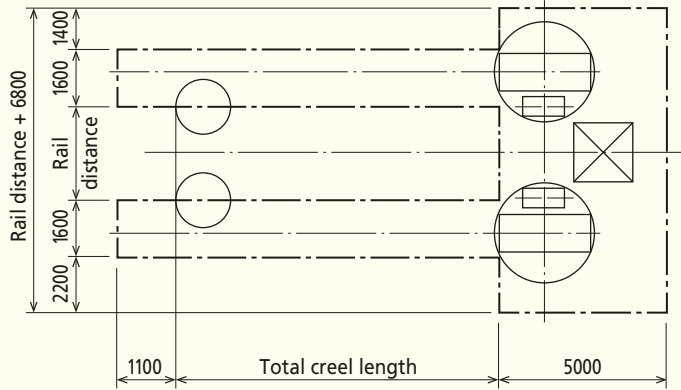
Spindle pitch (vertical)P		350	370	390
Spindle pitch(horizontal)P1		305	320	340
Width (W)		1820	1880	1950
Total height (H)	Spindle 6 rows	2130	2190	2250
	Spindle 8 rows	2480	2560	2640

## ■ Installation Drawing

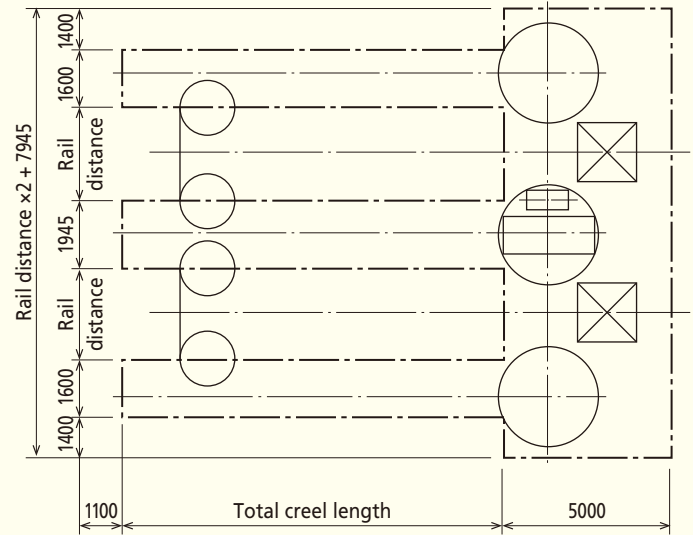
### Layout of CL-II and package station

Unit : mm

#### 1. For one creel



#### 2. For two or more creels



## ■ Specifications

Yarn supply package	Drum: Inner dia. of paper core $\phi 90 \sim 120$ ( $\phi 150$ possible), Cheese: Outer dia. $\phi 100$ or more
	Pirn: Length 380~460mm
Number of transfer packages	12~20pcs. (Simultaneous)
Package weight	Max. 14kg
Loader transport	Electric drive on rail, High speed: Max. 30m/min. Low speed: 3~5m/min.
Power source	3P 200V Creel loader: 2.65kW
	Package supporter: 0.75kW
	Package lifter: 2.2kW
Air source	6.0kg/cm <sup>2</sup> ( For transfer )
Weight	Creel loader: About 1,000kg
	Package supporter: About 200kg
	Package lifter: About 500kg
Safety device	Melody chime during travelling
	Emergency stop device by optical sensor

Note: Drawings, data, and photographs in this brochure are subject to change for improvement as necessary.

# T-Tech Japan Corp.

[www.t-techjapan.co.jp](http://www.t-techjapan.co.jp)

TTJ082111E